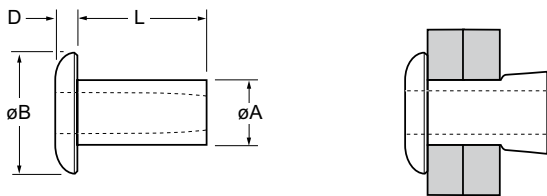


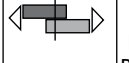




English	Français	Deutsch	Italiano	Español
Dome head	Tête plate	Flachrundkopf	Testa tonda	Cabeza alomada
Low carbon steel*	Acier bas carbone*	Stahl*	Acciaio a basso tenore di carbonio*	Acero bajo en carbono*
Zinc plated	Revêtement zingué	Verzinkt	Zincato	Zincado
Clear trivalent passivated	Passivation claire trivalente	Klar chromatiert, Cr6-frei	Passivazione chiara trivalente	Pasivado claro trivalente

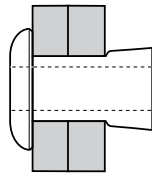
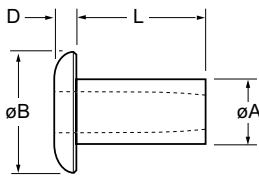
*: SAE 1008 / EN 10263-2 C8C DIN 10263-2 C8C Qst 34-3






ø					øB	D	L	øA		Fasteners per pod Nombre de rivets par chargeur / Niete pro Magazin / Rivetti per caricatore/ Uds./carga	Part No/ref	
	min.	max.	min.	max.								max.
3.2 (1/8")		1.57	3.26	3.34	5.47	1.12	3.2	3.25	1.42	1.42	71	01121-00404
	0.79	2.36					4.0				57	01121-00405
	1.57	3.18					4.8				51	01121-00406
	3.18	4.75					6.4				39	01121-00408
	4.75	6.35					7.9				32	01121-00410
	6.35	7.92					9.5				27	01121-00412
4.0 (5/32")	1.57	3.18	4.09	4.17	6.48	1.45	4.8	4.04	2.44	2.44	47	01121-00506
	3.18	4.75					6.4				38	01121-00508
	4.75	6.35					7.9				31	01121-00510
	6.35	7.92					9.5				27	01121-00512
	7.92	9.52					11.1				23	01121-00514
	9.52	11.10					12.7				21	01121-00516

all dimensions in mm / en millimètres / alle Maße in mm / in millimetri / en milímetros

1) typical values / valeurs moyennes / typische Werte / Valori tipici / valores típicos



ø					øB	D	L	øA		Fasteners per pod Nombre de rivets par chargeur / Niete pro Magazin / Rivetti per caricatore/ Uds./carga ± 1	Part No/ref					
	nom.	min.	max.	min.								max.	max.	max.	nom.	max.
4.8 (3/16")					4.85	4.93	8.87	1.78	4.85	3.20	50	01121-00605				
		1.57	3.18									4.0	5.6	38	01121-00607	
		3.18	4.75									7.2	8.8	33	01121-00609	
		4.75	6.35									10.0	12.0	28	01121-00611	
		6.35	7.92									13.5	15.1	24	01121-00613	
		7.92	9.52											21	01121-00615	
		9.52	11.10											19	01121-00617	
		11.10	12.70											17	01121-00619	
6.4 (1/4")		3.18	4.75	6.35	6.43	10.44	2.11	6.35	4.40	4.40	32	01121-00809				
		4.75	6.35										7.2	8.8	27	01121-00811
		6.35	7.92										10.0	12.0	24	01121-00813
		7.92	9.52										13.5	15.1	21	01121-00815
		9.52	11.10												19	01121-00817
		11.10	12.70												17	01121-00819

all dimensions in mm / en millimètres / alle Maße in mm / in millimetri / en milímetros

1) typical values / valeurs moyennes / typische Werte / Valori tipici / valores típicos