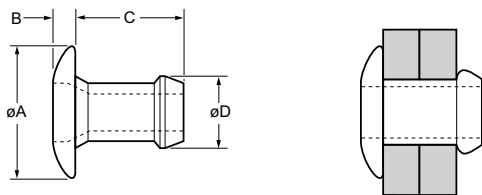




English	Français	Deutsch	Italiano	Español
Dome head	Tête plate	Flachrundkopf	Testa tonda	Cabeza alomada
Low carbon steel*	Acier bas carbone*	Stahl*	Acciaio a basso tenore di carbonio*	Acero bajo en carbono*
Zinc plated	Revêtement zingué	Verzinkt	Zincato	Zincado
Clear trivalent passivated	Passivation claire trivalente	Klar chromatiert, Cr6-frei	Passivazione chiara trivalente	Pasivado claro trivalente

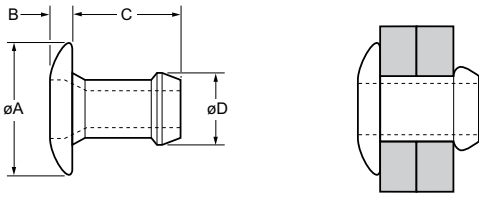
\*: SAE 1008 / EN 10263-2 C8C (DIN 10263-2 C8C, Qst 34-3)



ø	Ø		Ø		± 0.4	B	C	øD	kN <sup>1)</sup>	kN <sup>1)</sup>	Fasteners per pod/ Nombre de rivets par chargeur / Niete pro Magazin / Rivetti per caricatore / Uds./carga	Part No/ref
	min.	max.	min.	max.								
3.2 (1/8")	0.64	1.91	3.26	3.34	± 0.4	0.99	3.86	3.16	1.1	1.8	59	01821-00403
	1.14	2.42					4.37				58	01821-00404
	1.65	2.87					4.87				50	01821-00405
	2.15	3.43					5.39				48	01821-00406
	3.17	4.45					6.41				42	01821-00408
	4.19	5.47					7.42				37	01821-00410
	5.20	6.48					8.44				33	01821-00412
	6.22	7.50					9.45				29	01821-00414
	7.24	8.51					10.46				26	01821-00416
4.0 (5/32")	1.57	2.93	3.97	4.04	± 0.4	0.99	4.91	3.90	1.6	2.8	52	01821-00505
	2.15	3.43					5.41				49	01821-00506
	2.66	3.94					5.92				44	01821-00507
	3.68	4.96					6.94				39	01821-00509
	4.69	5.97					7.95				34	01821-00511
	5.71	6.99					8.97				31	01821-00513
	6.73	8.00					9.98				26	01821-00515
	7.75	9.02					11.00				24	01821-00517

all dimensions in mm / en millimètres / alle Maße in mm / in millimetri / en milímetros

1) typical values / valeurs moyennes / typische Werte / Valori tipici / resistencias máximas recomendadas



ø					øA	B	C	øD			Fasteners per pod/ Nombre de rivets par chargeur / Niete pro Magazin / Rivetti per caricatore / Uds./carga ± 1	Part No/ref										
	min.	max.	min.	max.									± 0.4	max.	max.	max.	kN <sup>1)</sup>	kN <sup>1)</sup>				
4.8 (3/16")	1.65	3.30	4.85	4.93	9.4	1.17	5.39	4.79	2.2	3.7	46	01821-00606										
	2.03	3.94					6.10						42	01821-00607								
	3.68	5.21					7.37								35	01821-00609						
	4.95	6.48					8.64										31	01821-00611				
	6.22	7.75					9.91												27	01821-00613		
	7.49	9.02					11.18														24	01821-00615
	8.76	10.29					12.45															
6.0	2.66	3.94	5.94	6.02	11.3	1.35	6.93	5.93	2.5	4.2	37	01821-06007										
	3.68	4.95					7.94						33	01821-06009								
	4.70	5.96					8.96								29	01821-06011						
	5.71	6.98					9.98										26	01821-06013				
	6.73	7.99					10.99												24	01821-06015		
	7.74	9.01					12.00														23	01821-06017

all dimensions in mm / en millimètres / alle Maße in mm / in millimetri / en milímetros

1) typical values / valeurs moyennes / typische Werte / Valori tipici / resistencias máximas recomendadas